




— 2022 —

NRVHBA
EXCELLENCE IN
BUILDING AWARDS



■ 2022 Awards

Design Excellence: Best Outdoor
Living/Landscape

Design Excellence: Best Bath

Design Excellence: Best Kitchen

Design Excellence: Best Remodeled Home

Design Excellence: Best New Home

NRVHBA Service Award

Associate of the Year

Builder of the Year

Design Excellence: Best Outdoor Living/Landscape Nominees

Nominees should be judged on the overall design, appeal and function, the creative integration of design with site considerations and the use of furniture, fixtures and amenities.

Tyris Homes

Slate Creek Builders

Shelter Alternatives

[Back to Nature Landscaping & Construction](#)

BACK TO NATURE LANDSCAPING & CONSTRUCTION:

Lusk Project

Design



Simple but functional Outdoor Living space made up of a large two tiered patio. Amenities inside this project include a fire pit, pergola for shade, seating area, outdoor lighting and plant screenings for privacy. Perfect space to entertain all year round.

TESTIMONIAL

Back To Nature did amazing work on our patio and landscaping installation. We are very pleased with the actual work that was completed

FINAL

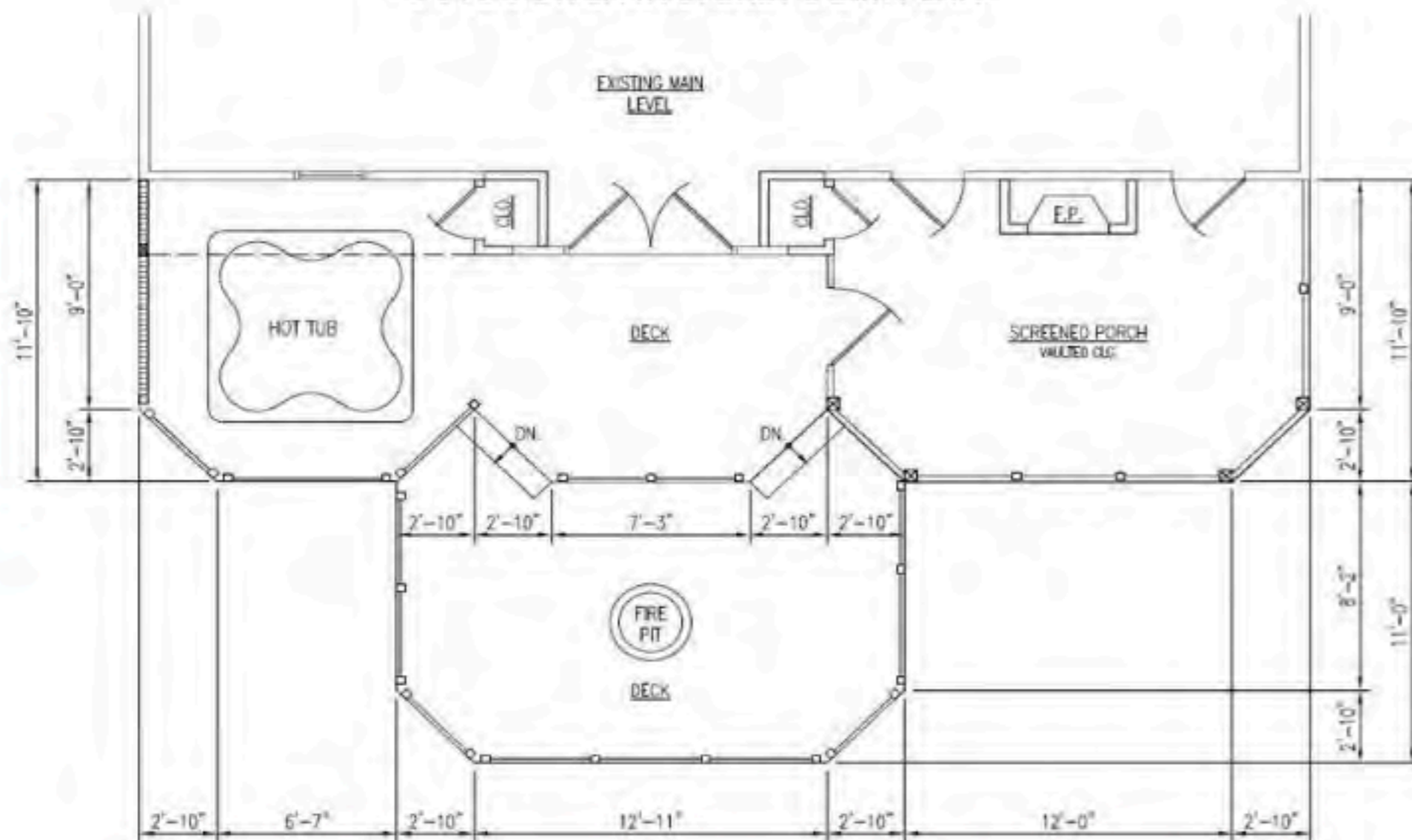


SLATE CREEK BUILDERS:

Ekey Project

Design

OUTDOOR LIVING: EKEY DECK PLAN



Our client asked for the ultimate in outdoor entertaining-a three area party deck that took advantage of the incredible view from the rear of the home. To accomplish this, we demo'd an undersized and aging deck and replaced it with the hot tub zone, the firepit zone, and the screened porch zone. The screened porch is anchored by the addition of the double-sided stone fireplace and vaulted ceiling-which is the perfect place for a future dinner party.

TESTIMONIAL

Couldn't be happier! They designed and built a big addition to my home. Framing, electric gas, water, drywall, trim, paint, roofing, hardwood, tile, even a hot tub... They did it all! Extremely pleased with the results. Will absolutely be calling them again for my next big project.

FINAL

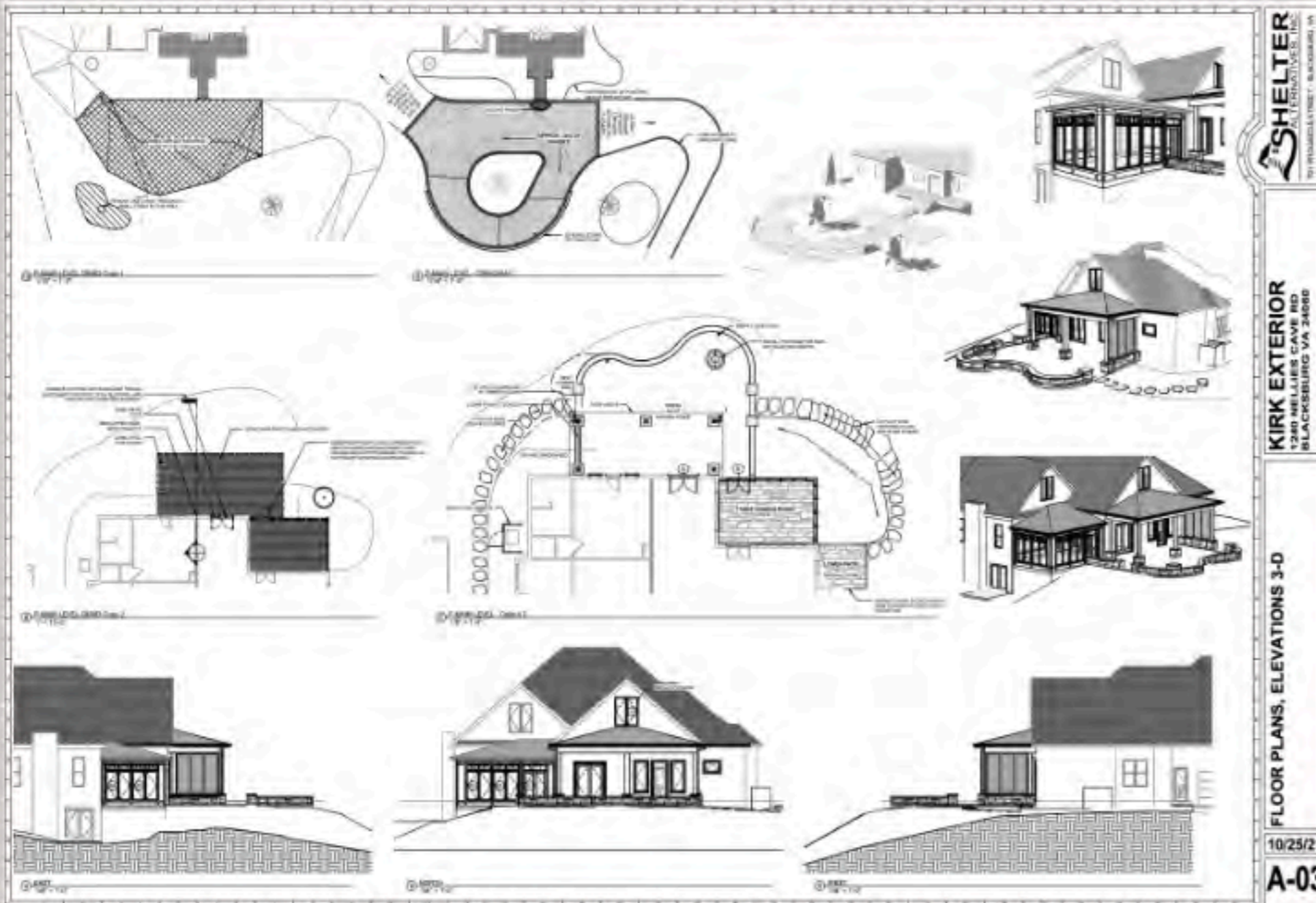
THREE NEW AREAS



SHELTER ALTERNATIVES:

Kirk Project

Design



The goal of this remodel was to create year-round beautiful and functional outdoor spaces that complement home's old-world charm and character.

The existing conditions posed a significant challenge. We replaced the rear brick patio with natural flagstone that follows the hill crest, a process that required a complex foundation of helical piers and grade beams to support it on over 10 feet of backfill. We flanked the patio with dry-stacked stone walls to define the space, lend additional seating, and frame the mountain views. The roofed area is anchored to the patio with stone bases and white oak timber columns. These wood elements are repeated in the new 8' mahogany French doors, tongue and groove white oak ceiling, and a custom build cedar privacy screen. Two old-world pendant fixtures fill and illuminate the dining space under the soaring 12' ceilings. To complete this rustic design and its year-round livability, we installed a propane fire bowl with electric igniter.

To give the patio a retreat in cooler weather, we enclosed and insulated the adjacent screened-in porch. Two-piece crown moulding and panel trim in this 3-season room echo the old-world theme while the natural flagstone floor ties in with the patio.

We also added generous walkways and stairs constructed of 4-5' wide natural stones that connect all the new spaces. Throughout the grounds, the landscape and hardscape lighting are seamlessly incorporated to light the grounds while creating minimal light pollution. This lighting is timed automatically at night and is subtly effective at creating safe walkways.

We replaced the worn-out asphalt driveway in front of the house with a circular drive of cobblestone-style pavers. We constructed a stacked stone retaining wall to contain the expanded turnaround, using repeated elements to tie all the exterior spaces together. This completed the natural and rustic appeal of the overall remodel and gave this beautiful home the welcoming entrance it deserves.

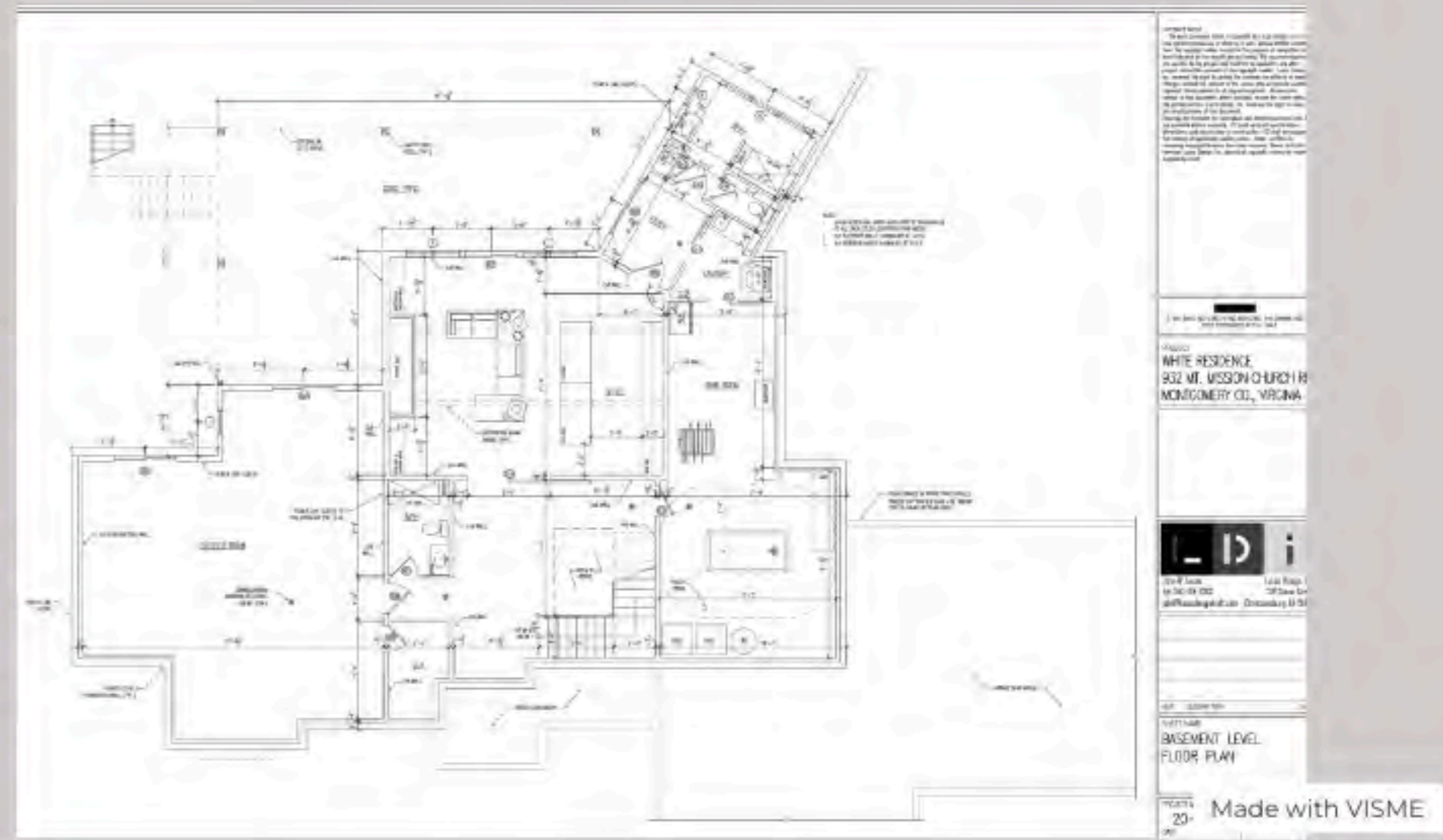
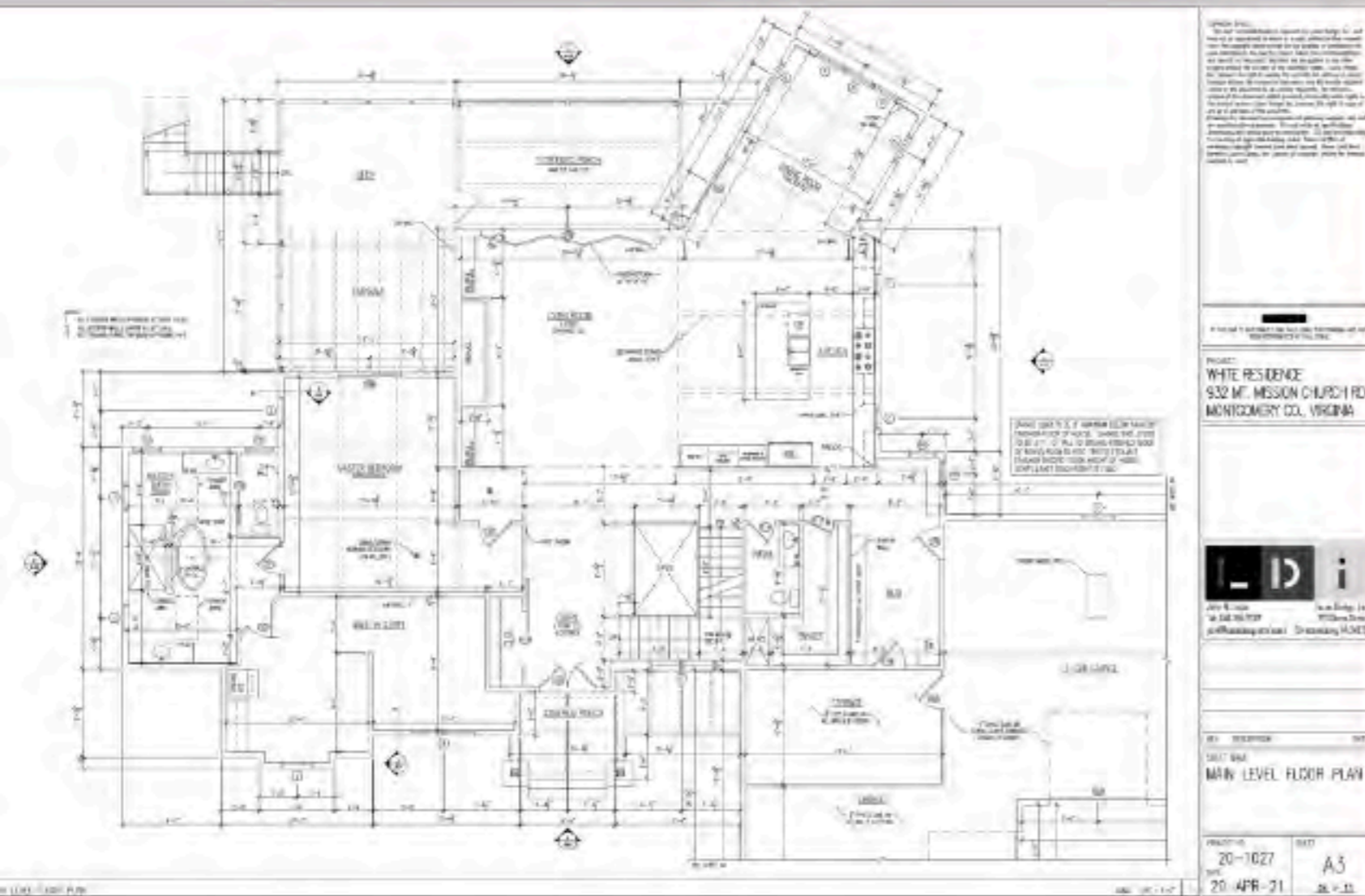
FINAL



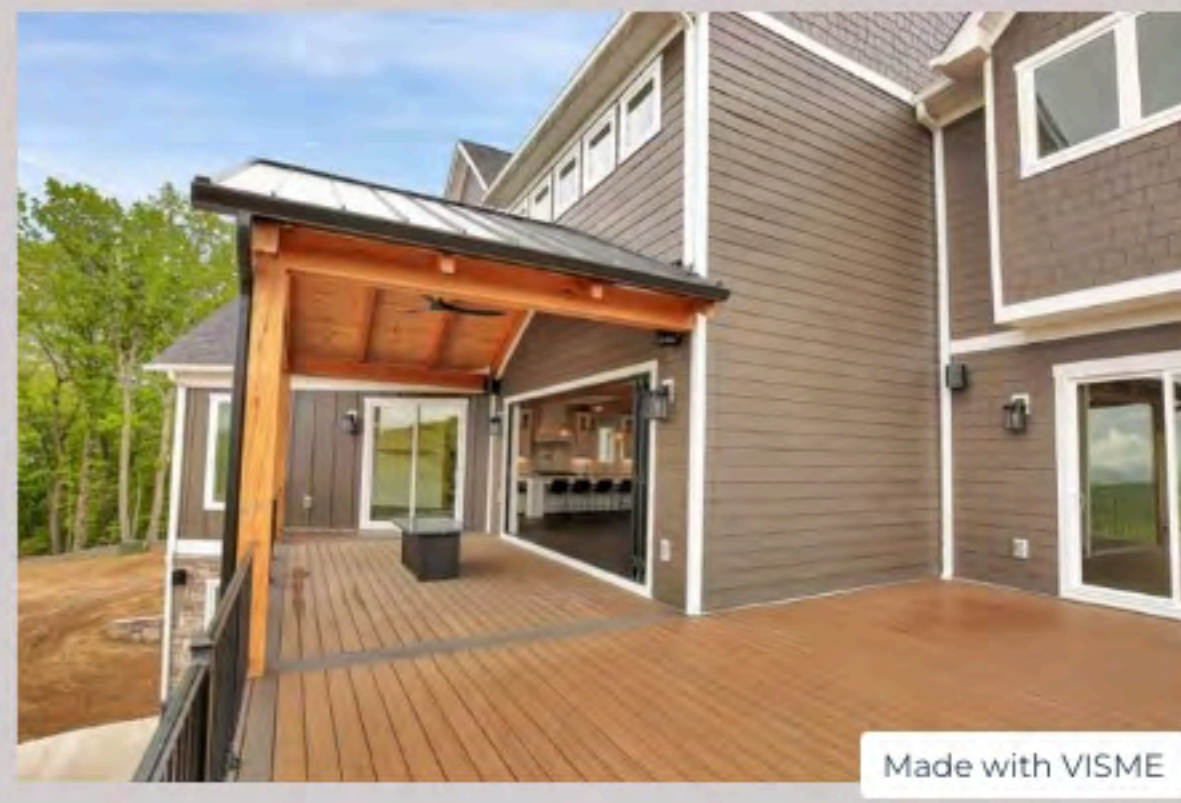
TYRIS HOMES: Mount Mission Project

Beautiful Craftsman Mountain Home

Design



FINAL



Design Excellence: Best Bath Nominees

Nominees should be judged on the layout, function and integration of plan design, the creative use of space, and the overall appeal of cabinetry and unique fixtures.

Shelter Alternatives

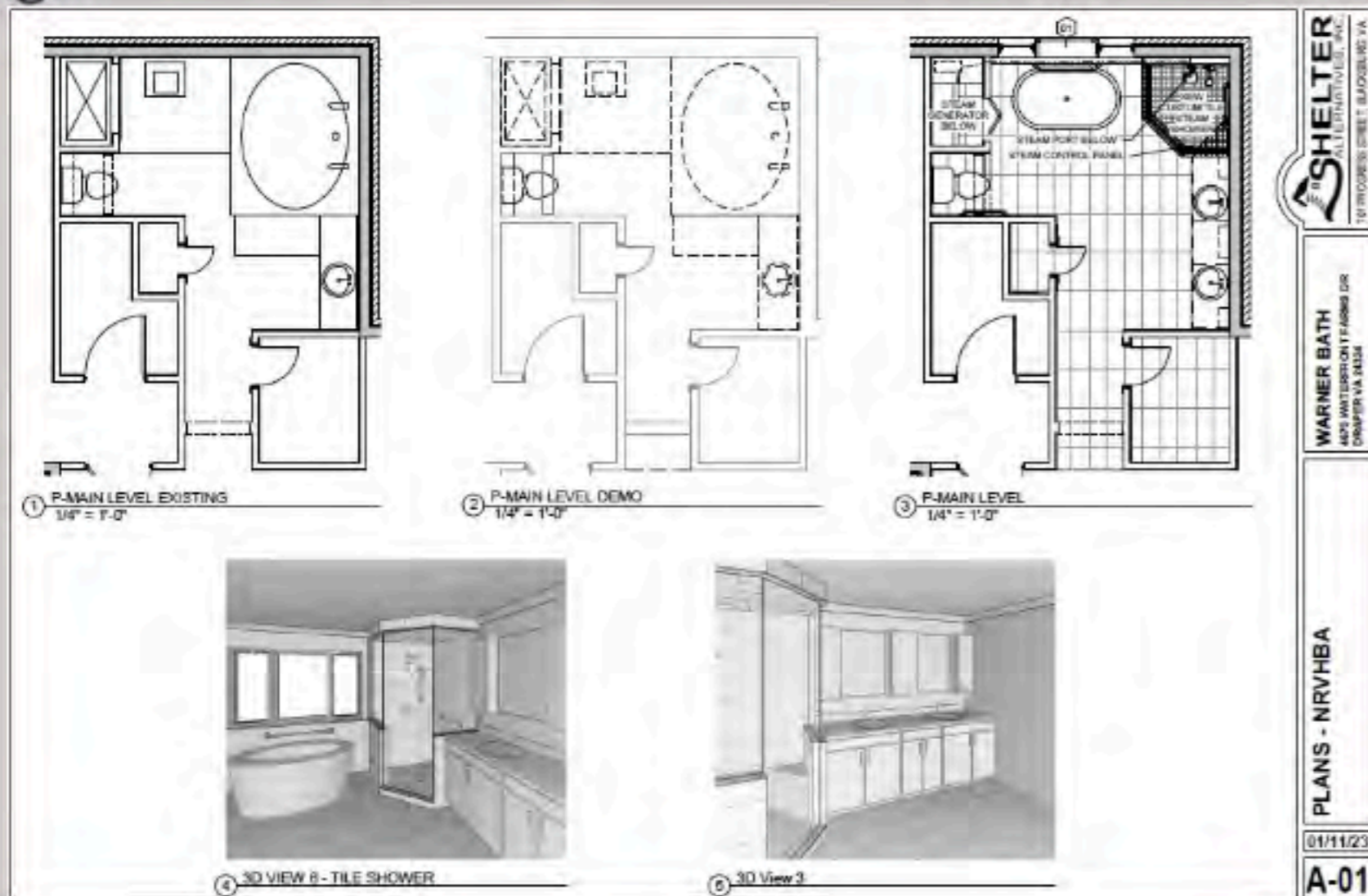
Slate Creek Builders

Tyris Homes

SHELTER ALTERNATIVES:

Warner Bath

Design



The before and after comparison photos of this project dramatically showcase the changes to this room, one that now has a beautiful view, abundant natural light, more space, efficient storage, and better functionality.

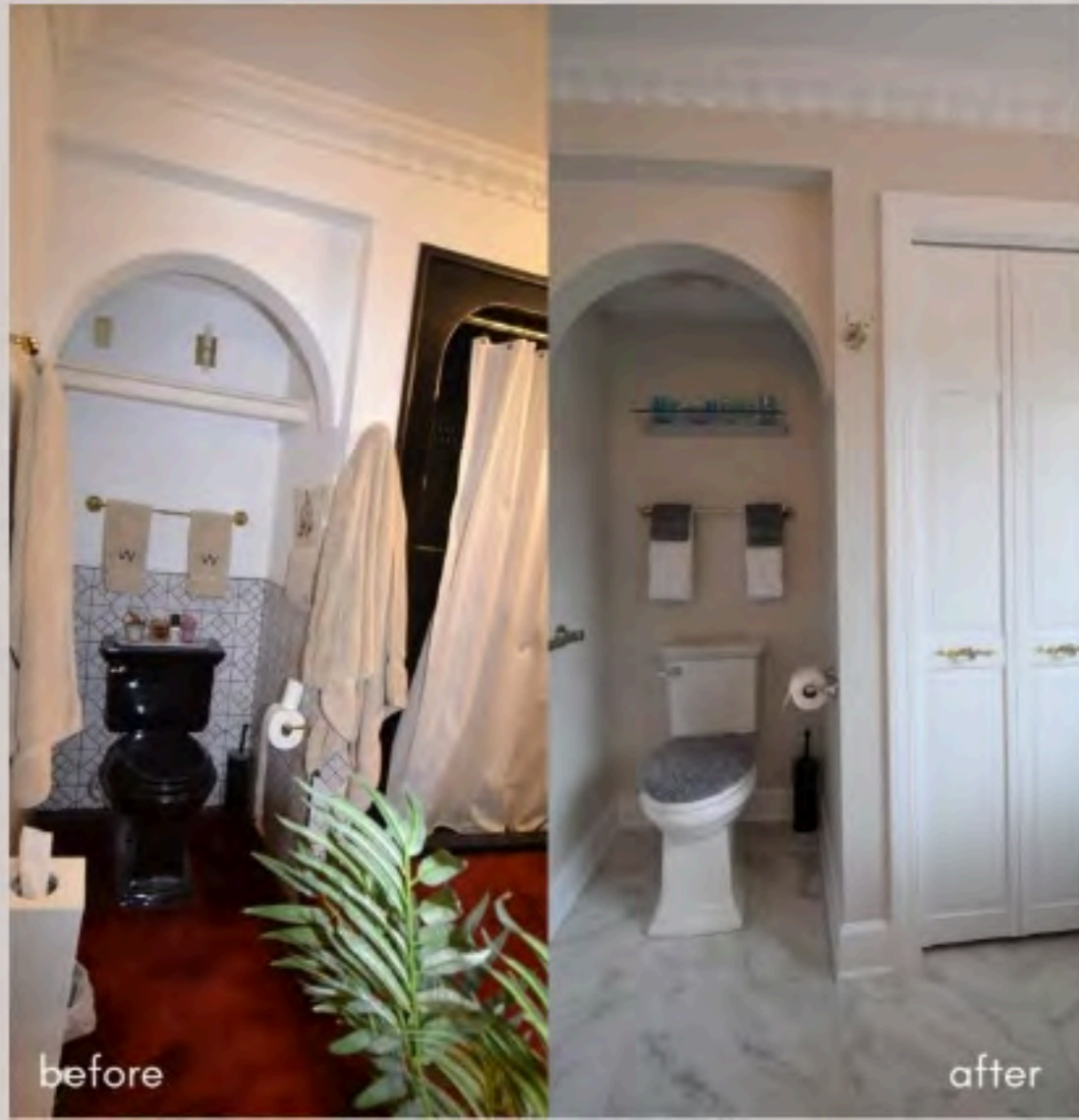
The goal of this remodel was to open the bath using the same footprint and take advantage of the Claytor Lake view that was blocked by a wall. To achieve this, we removed all fixtures, concrete risers, a dark tile wall and outdated carpet but left in place some original architectural details including an archway, crown moulding and some other ornate features. The clients approached their selections with the goal of elegance and wanted to pay homage to the home's original eclectic design.

One of the most dramatic changes is the addition of a Pella picture window that sits above a soaking tub and overlooks the lake. Removal of the oversized existing tub allowed space for a larger custom steam shower. This change gave us room to remove the wraparound vanity, creating a more linear piece along one wall which also allowed the space for new cabinetry, a second sink and updated light fixtures.

Another dramatic change involved the deep burgundy carpet throughout the room. This color, coupled with the dark wood cabinetry, black fixtures, and dark tile wall was too oppressive and heavy for a bathroom space. We leveled the floor and added Calacatta Oro tile in a warm gray and white which complements the cool tones of the other fixtures and cabinetry.

While the archway that encases the toilet area remains, the removal of a tile half-wall, and a new toilet give the space cleaner visual lines. Next to this enclosure, we swapped the old shower for closet space behind a bifold door. Additionally, we included a secondary bath fan/light combination with more efficient ductwork and terminations to better clean the air of excess humidity.

FINAL





This bathroom transformation was quite complex with many obstacles to address. Between the technical aspects, the choice of materials, functionality, and expertise in coordinating it all was not a project any contractor could do. Shelter Alternatives was able to smoothly navigate supply chain issues and hand over an incredible new bath remodel that more than met our expectations. Our favorite addition was the integrated steam shower that continues to work flawlessly and so discretely. At their suggestion, we went with one and have not regretted it. It is like a sauna without all the hassle. I set the timer for the length of time I like for a shower at the same time and DONE! Easy on energy and quick. A sub-mini vacation often. To step out into the most enticing environment one could ever ask for doesn't hurt either. I am not sure the pictures do justice for the perfection given. Thanks, Shelter!



TESTIMONIAL

SLATE CREEK BUILDERS:

Shortt Bath

Design



MASTER VANITY
BEFORE & AFTER



This master bathroom went through a complete overhaul- from basic finishes to fabulous! We built an addition to house the ultimate in master closet, which allowed for space inside the existing footprint to expand the master bathroom and create a gorgeous dressing/makeup area. The cabinetry and tile work are the real feature of this bathroom-with the inlaid tile floor and shower walls and the floor to ceiling and wall to wall custom cabinetry.

FINAL

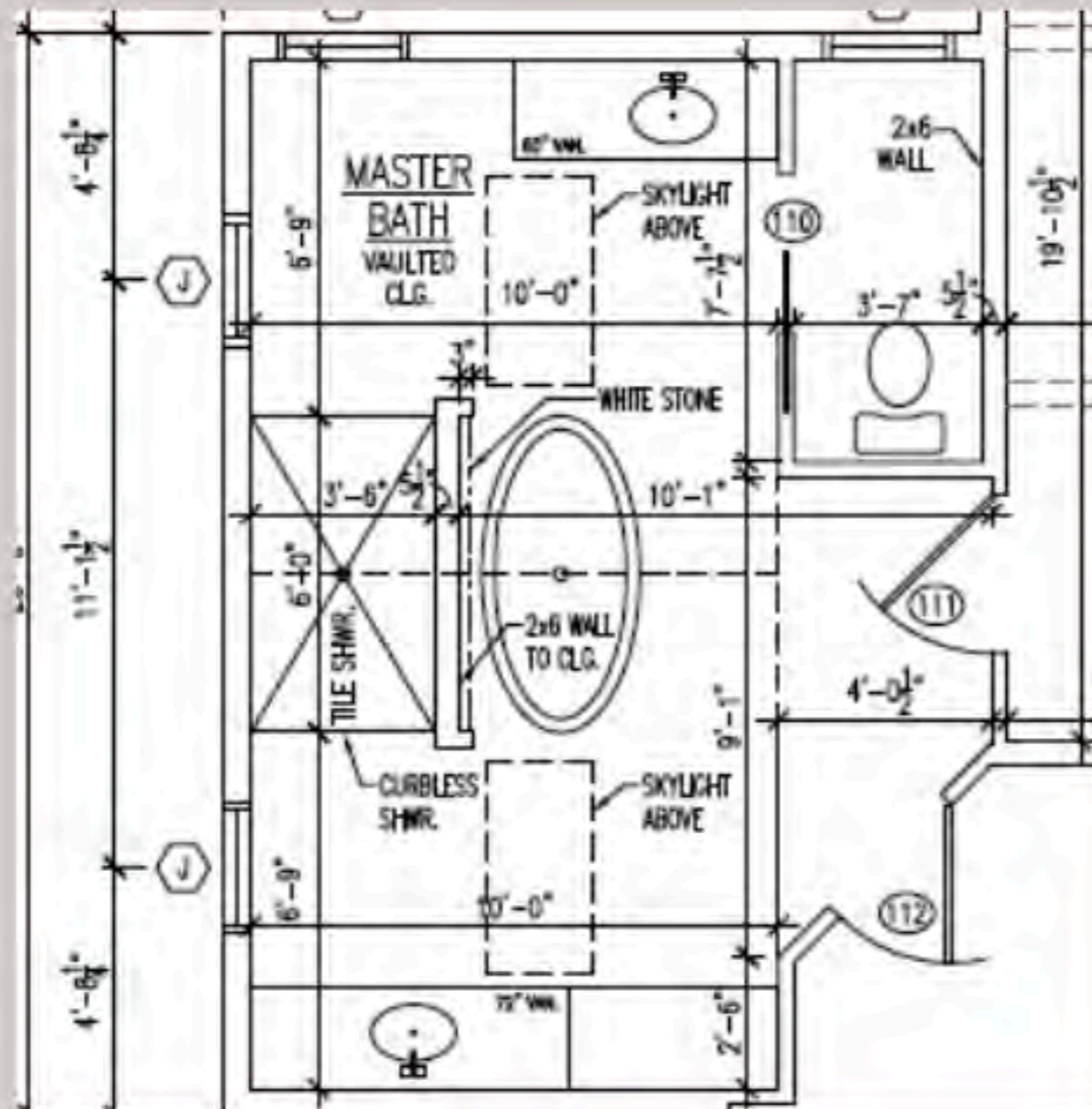


MASTER SHOWER
BEFORE & AFTER



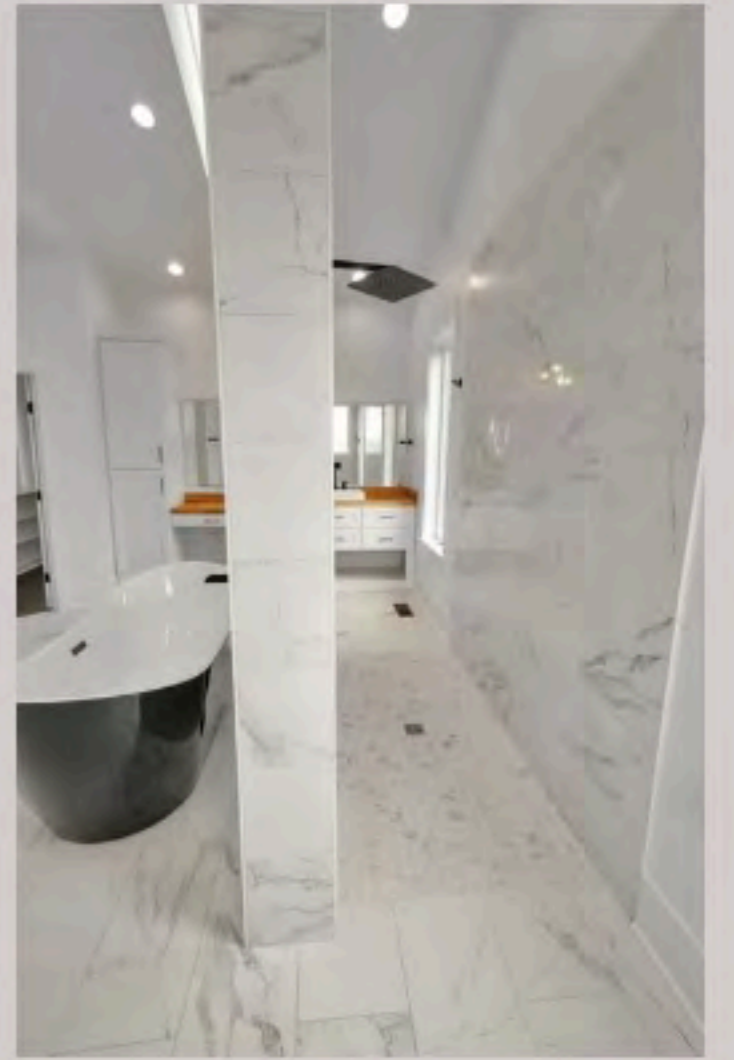
TYRIS HOMES: Mount Mission Bath

Design



Beautiful Craftsman Mountain
Home

FINAL



Design Excellence: Best Kitchen Nominees

Nominees should be judged on the layout, function and integration of plan design, the creative use of space , and the overall appeal of cabinetry, appliances and unique fixtures.

Shelter Alternatives

White Builders

Slate Creek Builders

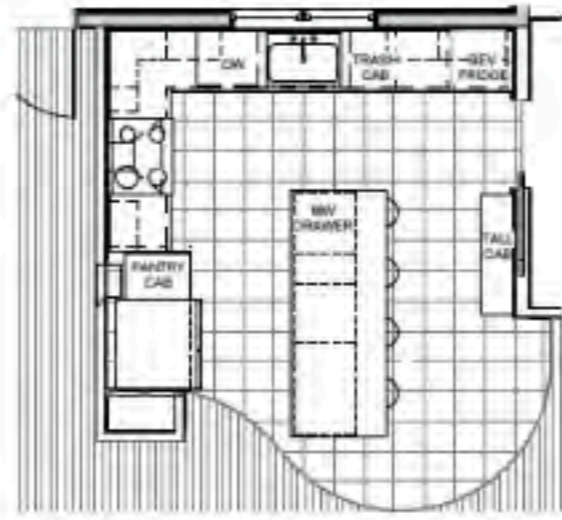
Tyris Homes

SHELTER ALTERNATIVES: Nichols Kitchen

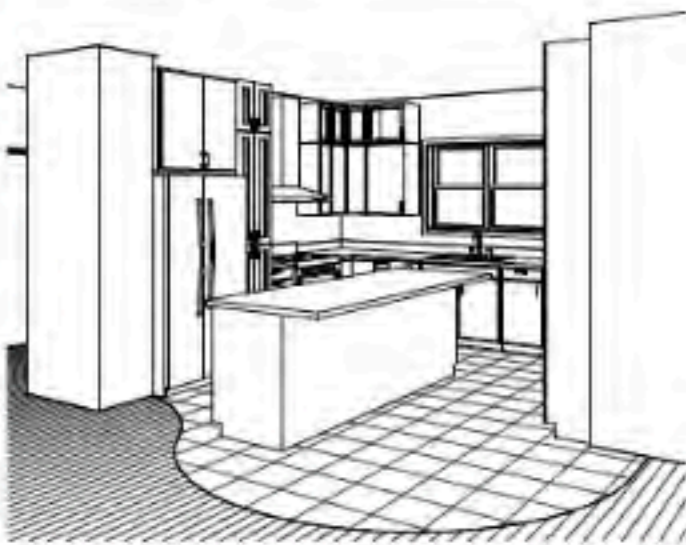
Design



① P-KITCHEN DEMO
1/4" = 1'-0"



② P-KITCHEN PROPOSED
1/4" = 1'-0"



③ 3D View 1



④ 3D View 2



NICHOLS REMODEL
803 PETER PASS
BLACKSBURG, VA 24060

PLANS - NRVHBA

01/11/23

A-01

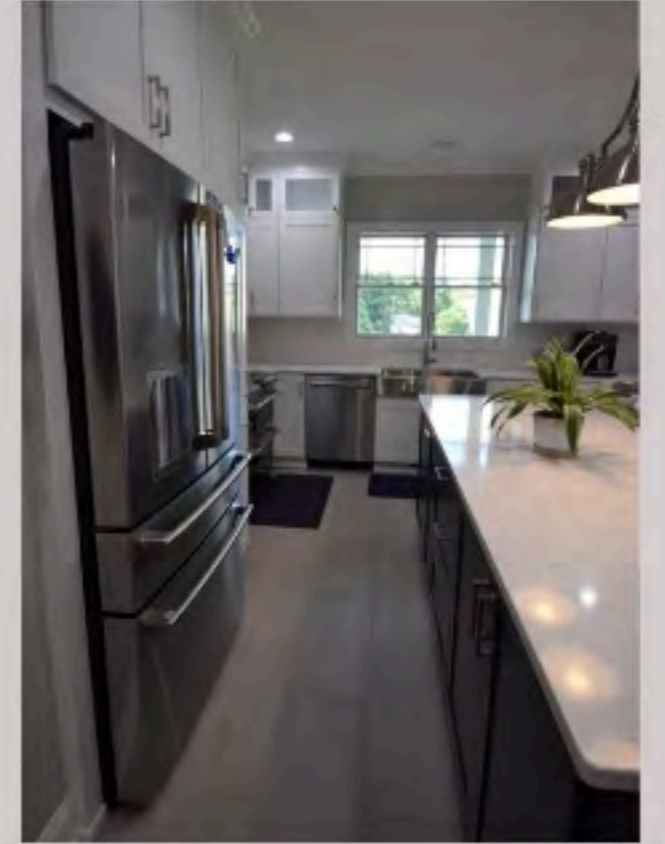
The goal of this remodel was to use its existing footprint more efficiently. We removed almost all the appliances, the wraparound island, and outdated cabinetry and countertops in favor of updated appliances, a better aligned island, and ceiling height cabinets.

The dishwasher, range, and sink were all replaced and installed in their previous locations while the refrigerator was moved from its enclosure and placed in the old pantry's location. This change allows room for both the refrigerator and new cabinets. The new refrigerator location, now closer to the other living spaces, makes it easier to grab a drink and stay out of the kitchen flow. The old refrigerator location houses a tall cabinet with more pantry space. The cabinetry, quartz countertops, and contemporary linear subway tile backsplash are all a seamless white which stands out brilliantly against the stainless-steel appliances and new chandelier. The ceiling height cabinets allow for more storage and new features, such as a beverage fridge and trash cabinet.

The kitchen floor was the same wood as the living space and the only design element to separate them was an island that significantly restricted flow. We removed the wraparound peninsula and a smaller, less functional island in the kitchen's center and added a larger island with a microwave drawer. The new layout allows for ample circulation while still leaving a dedicated cooking area out of the kitchen's flow. Additionally, we created a unique curve in the wood flooring and added a tile floor, giving a nice delineation to the kitchen space. This island now lines up with the sink, giving the room a more streamlined look. Painted in Hale Navy, it nicely offsets the surrounding white and creates a subtle connection to the living room accent wall painted in the same bold navy.

This kitchen remodel expanded pantry and storage space, improved functionality and flow, and visually created a much more efficient room.

FINAL



SLATE CREEK BUILDERS:

Shortt Kitchen

Design

KITCHEN PLAN
BEFORE



KITCHEN PLAN
AFTER



To create this dream kitchen, we absorbed space from the adjacent guest bathroom and guest closet, and expanded the footprint large enough for the biggest island possible! The luxury quartzite tops and backsplash are complete stunners, but the custom metal vent hood is also a feature in the room! The storage solutions throughout the space have been curated specifically for the homeowners, including smoothie stations, a hidden bar, hidden icemakers and refrigerator drawers, and a secret walk-in pantry with a built-in freezer.

FINAL



ISLAND
BEFORE & AFTER



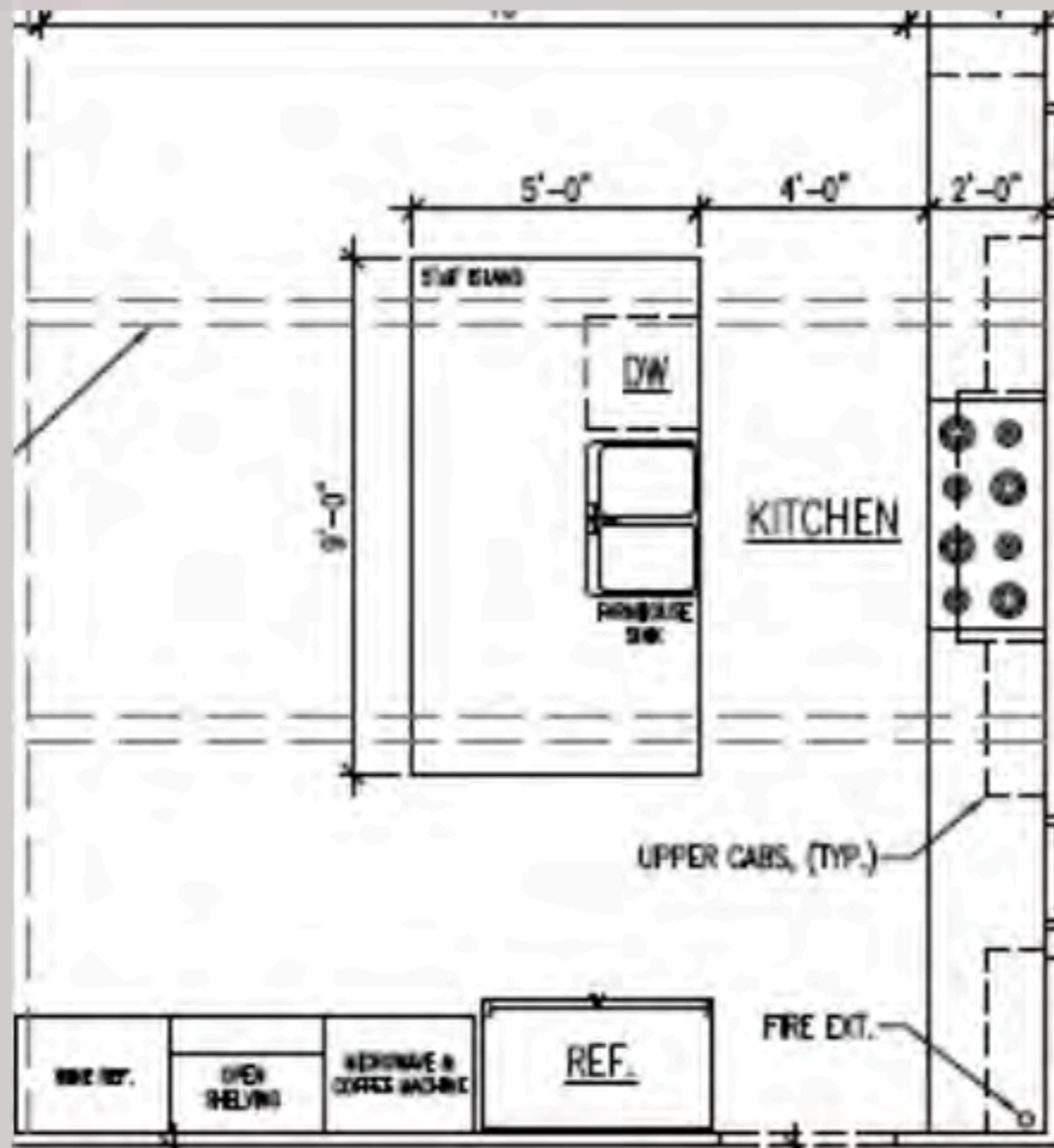
HIDDEN PANTRY



KITCHEN DETAILS

TYRIS HOMES: Mount Mission Kitchen

Design



Beautiful Craftsman Mountain
Home

FINAL



WHITE BUILDERS: Jefferson Kitchen

Design



The Jefferson St Kitchen Makeover was a dream project taking a dark kitchen and transforming it into a fun, joyous, colorful kitchen perfect for this young family! The kitchen not only catches your eye with the creative use of color in the cabinetry, tile and lighting but serves as a functional kitchen where no detail was spared. This gourmet kitchen includes dual sinks, gas range, double ovens, wine fridge, beverage fridge and undercounter ice maker. The flow of the kitchen makes for an ideal everyday kitchen and the perfect space for entertaining!

FINAL

Before



After



Design Excellence: Best Remodeled Home Nominees

Nominees should be judged on overall design, appeal and function, creative integration of design with site considerations, and use of furniture, fixtures and amenities . Is there an obvious quality improvement shown?

Ink Works Studio

Blue Ridge Home Improvement

Slate Creek Builders

White Builders

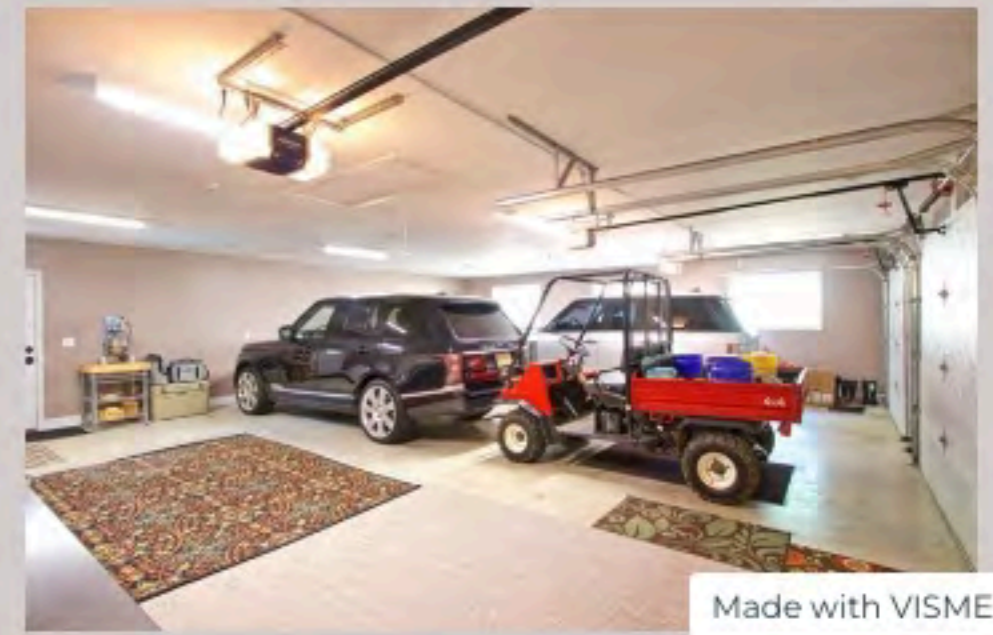
Blue Ridge Home Improvement: Riverside Remodel

Design



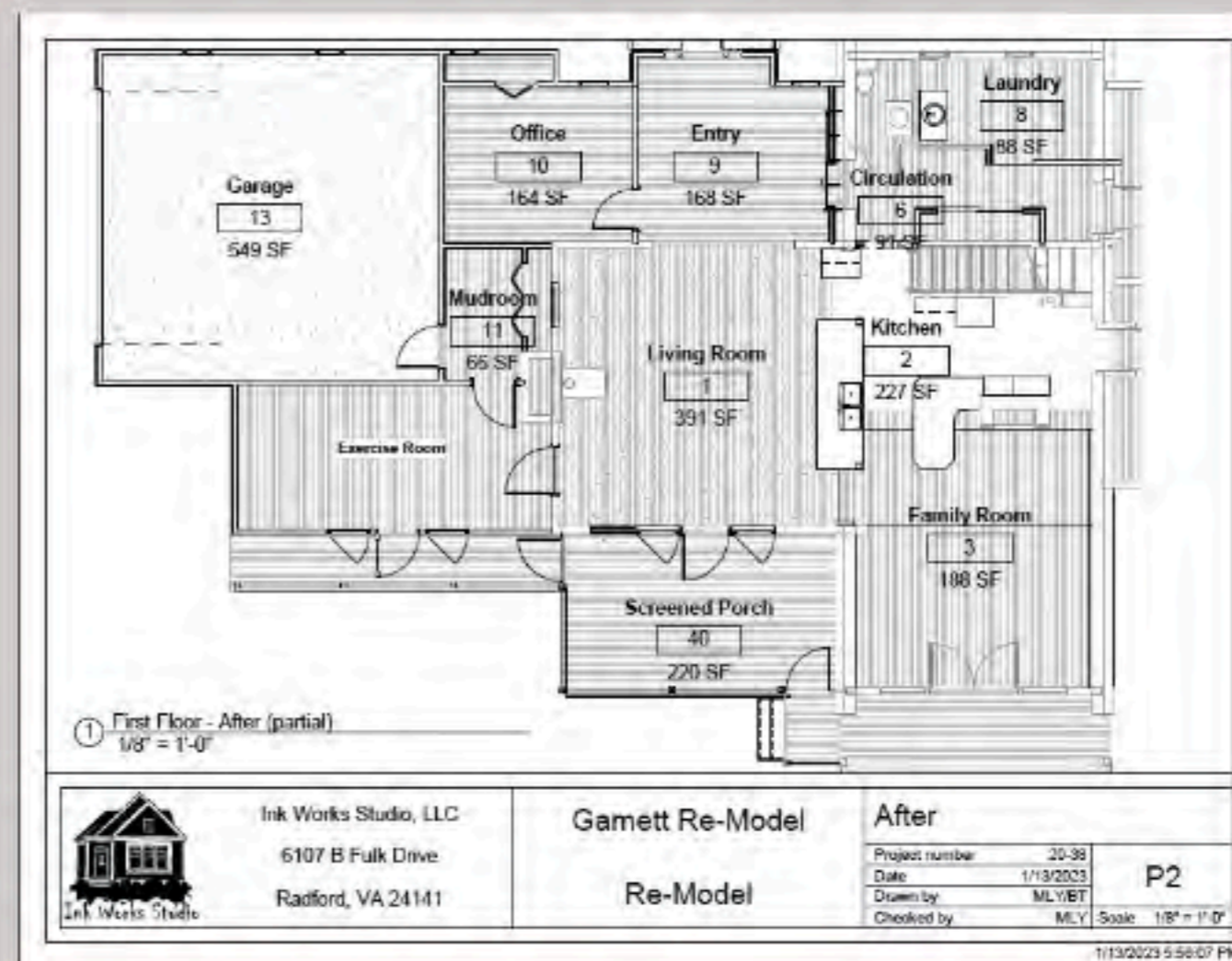
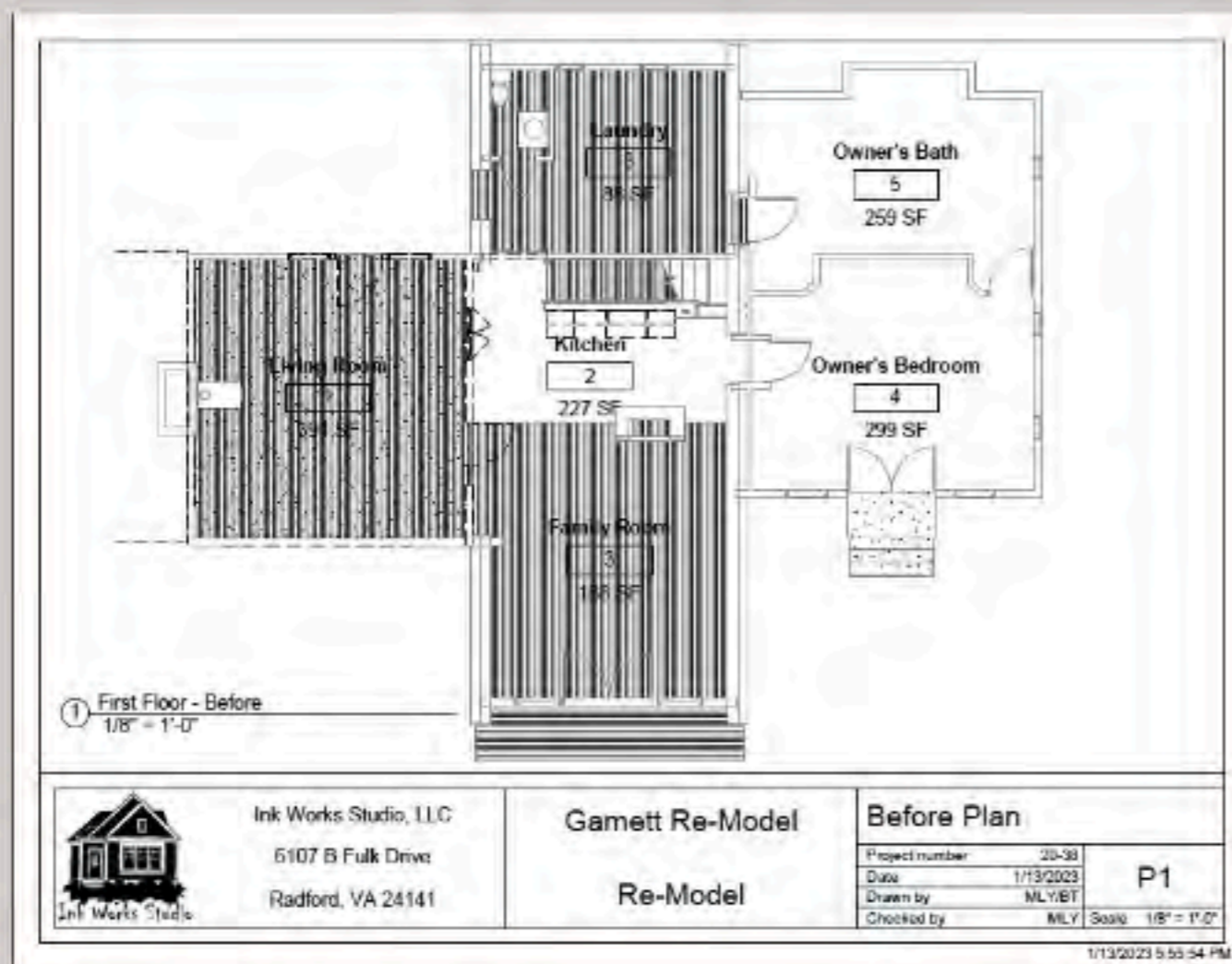
Nestled in the hillside of Giles County VA on a property fit for a hobby farming couple was this mansard-covered two wing home severely in need of a face lift for its entry way. The main struggle for this home? "no one knew where our front door was." The client desired a renovation to the home that would increase the appeal and usability of the entry wing of their home all while incorporating a Spanish Revival architectural style which was inspired by their love for certain homes in Florida. Blue Ridge removed an existing entry wing to the home and started fresh. The project consisted of a new 40'x30' three car garage addition, a 30'x12' entry wing remodel, and a full master suite renovation. Some of the unique materials installed on this project required unconventional sourcing and training. The roofing was likely the most unique part of this project and is a Decra metal shingle that is created to mimic traditional Spanish style Terracotta, The wall covering is a painted stucco, and the windows are complete with custom iron glass guards. The grand entry is complete with A prominent front door and octagonal shaped sitting area that looks out over the farm. Overall this project was one of the most challenging but rewarding projects to look back on that Blue Ridge has completed over the years.

FINAL



Ink Works Studio: Gamett Remodel

Design



This Claytor Lake home had all of the views of the Lake, but no connectivity inside the house. The homeowner wanted to create an open-concept for the living spaces of this home, as well as add an office, an exercise area, and a 2-car Garage. By removing a load-bearing wall, the kitchen became the new central focus for this space, while still taking advantage of all the lake views.

FINAL

Before



After



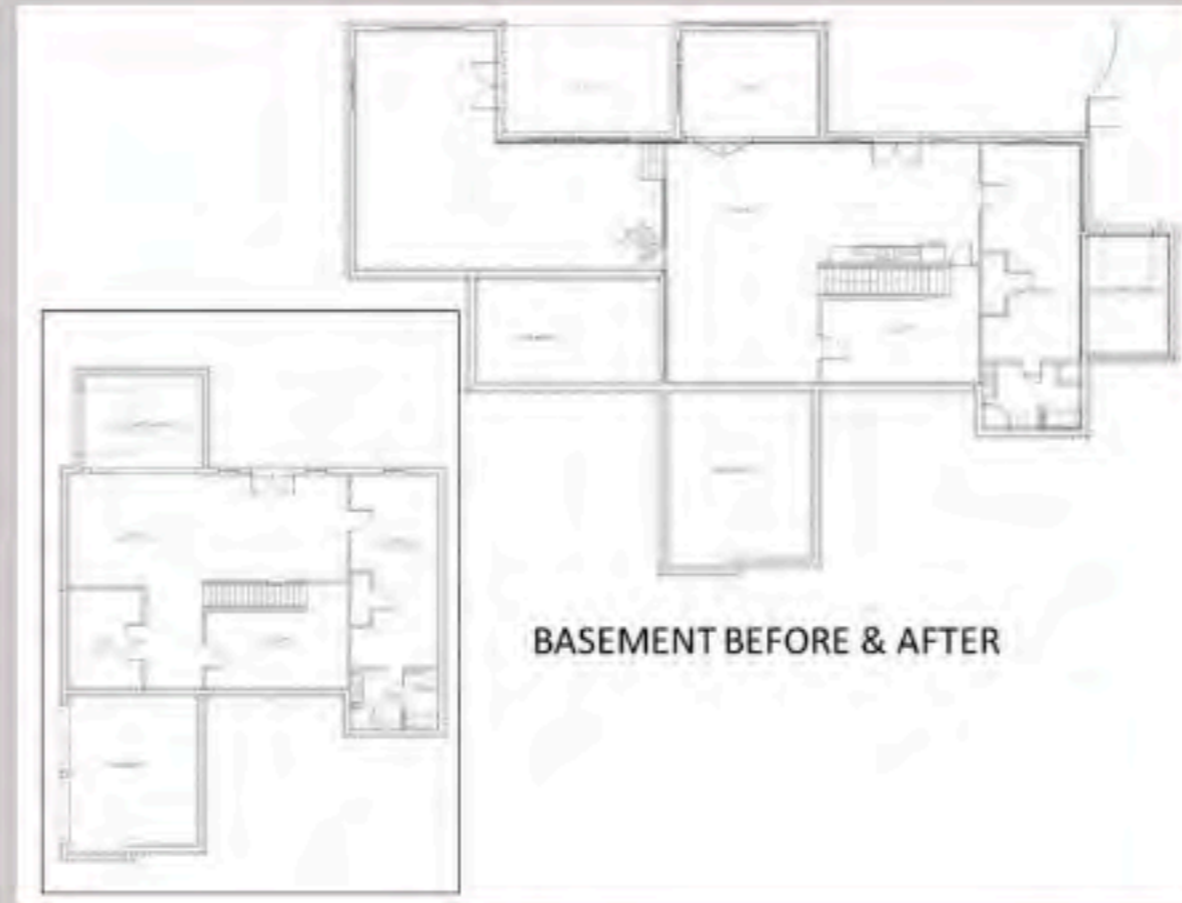
SLATE CREEK BUILDERS:

Shortt Remodel

Design



MAIN FLOOR BEFORE & AFTER



BASEMENT BEFORE & AFTER



SECOND FLOOR BEFORE & AFTER

This home is an absolute stunner after a complete makeover! We gutted and transformed every room of the existing footprint-new kitchen, new bathrooms, new flooring, lighting, walls of millwork, and even added a dormer to vault the existing great room... but then we expanded the footprint and enlarged the home. We added on a luxury master closet with golf cart garage below, and two en suite baths above for the spare bedrooms. Then we added a third car garage bay and a large wing for two home offices-that are anchored by a stunning stairwell that opens up to the new rec room below. The basement got a kitchenette, home gym and remodeled bathroom. Even the existing deck got upgraded with glass railings, with a new screened porch added to better enjoy the golf course and mountain views. New siding and windows throughout, an enlarged and expanded front porch and all the beautiful details created incredible curb appeal from both the front and back.

FINAL



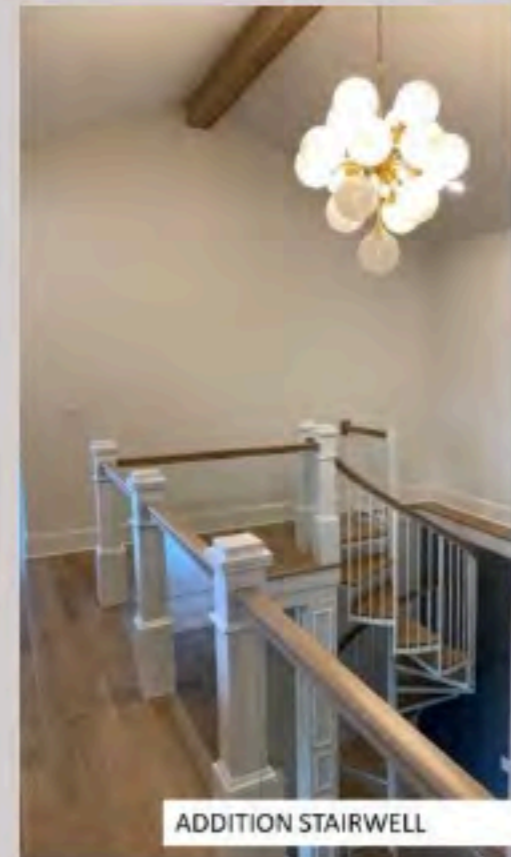
STREET VIEW: BEFORE



HIS AND HERS OFFICES



NEWLY VAULTED GREAT ROOM AND MOVED FIREPLACE



ADDITION STAIRWELL

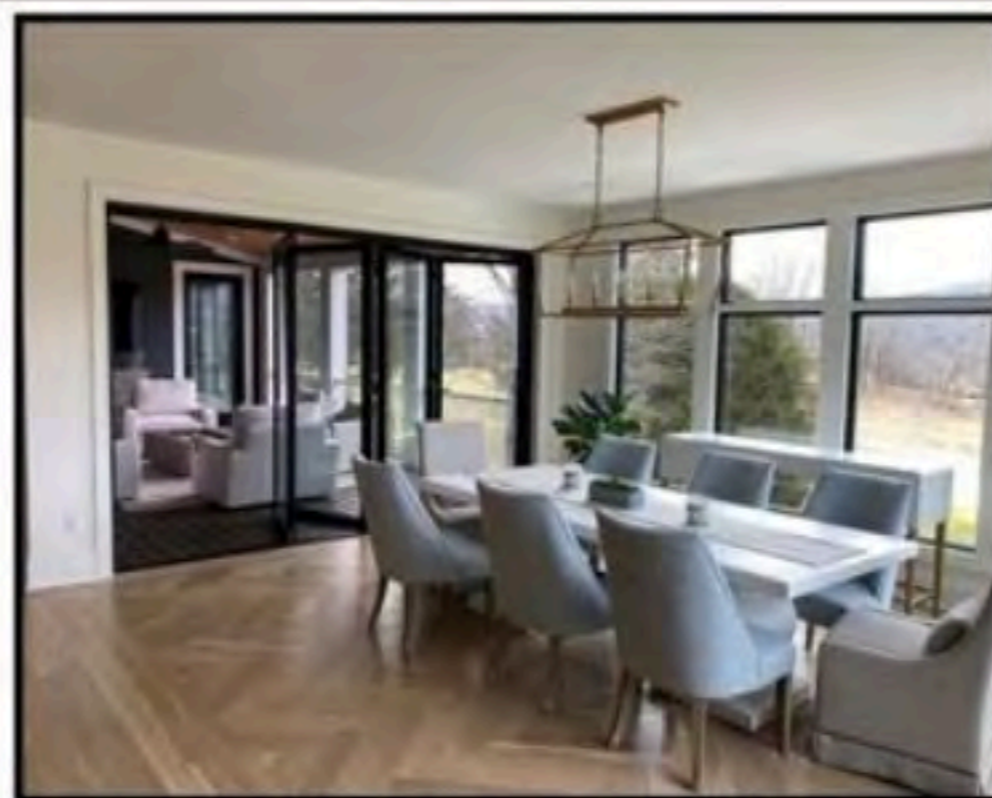


SCREENED PORCH

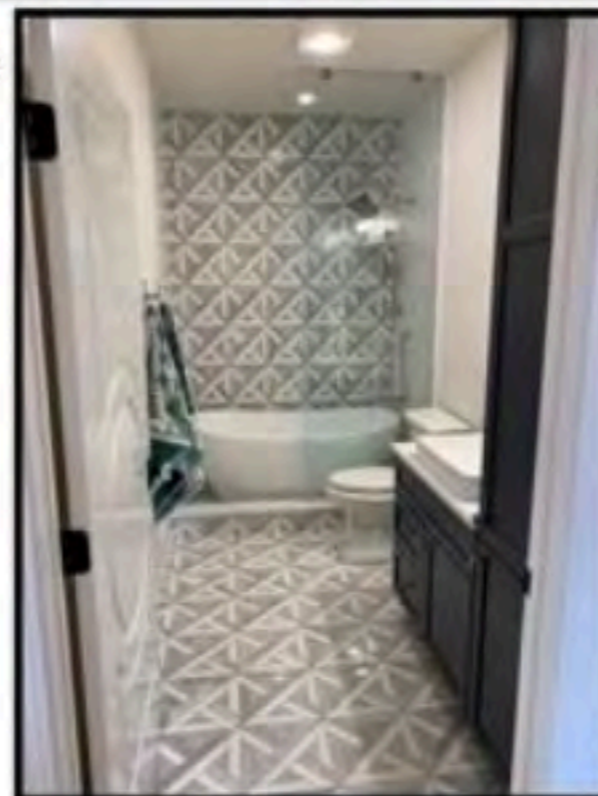
FINAL



MASTER BEDROOM MILLWORK



OTHER ROOMS:
DINING
FOYER
GUEST BATH
LAUNDRY



Design



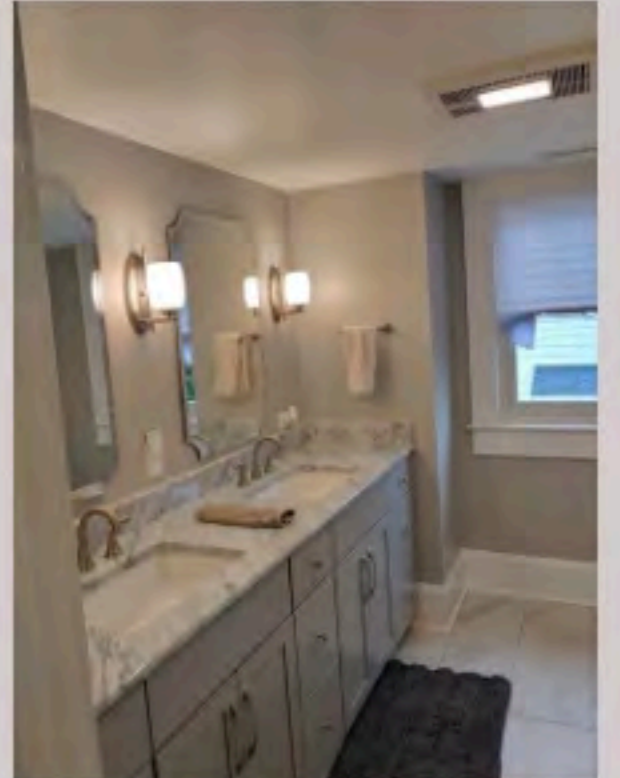
This cozy, 1923's bungalow was transformed into a bright, updated space full of charm! The original living room, dining room and kitchen were each very small spaces that are now one inviting, open space to entertain family and friends. The homeowners thoughtfully selected light finishes that helped to make this cozy house feel larger. All new plumbing, electrical and HVAC help make this 100 year old home perform to todays standards. The original hardwood floors were kept maintaining the character of the home and were refinished by a local hardwood floor specialist. On the exterior, new roofing was completed along with a new driveway, landscaping, windows and exterior paint. From top to bottom, every space this is home was renovated to create the perfect modern-day bungalow!

FINAL

Before



After



Design Excellence: Best New Home Nominees

Nominees should be judged on overall exterior and interior design and construction, function and creative use of interior space, creative integration of plan design with site considerations, unique features and fixtures, and innovative use of flooring and wall treatments.

Eagle Construction

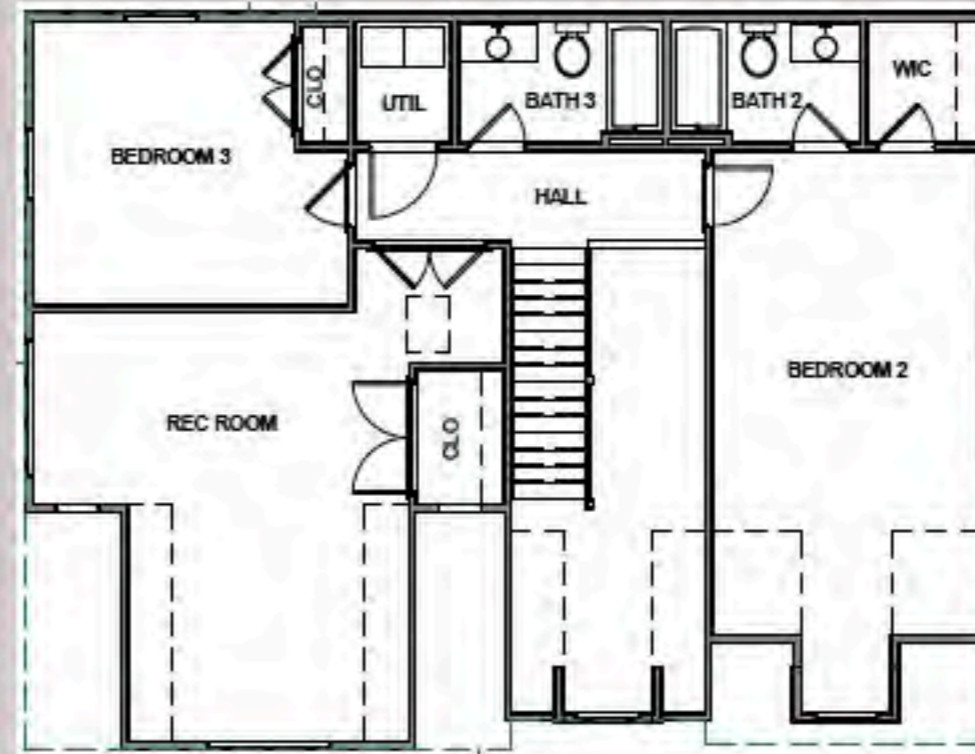
White Builders

Tyris Homes

EAGLE CONSTRUCTION:

The Meadows

Design



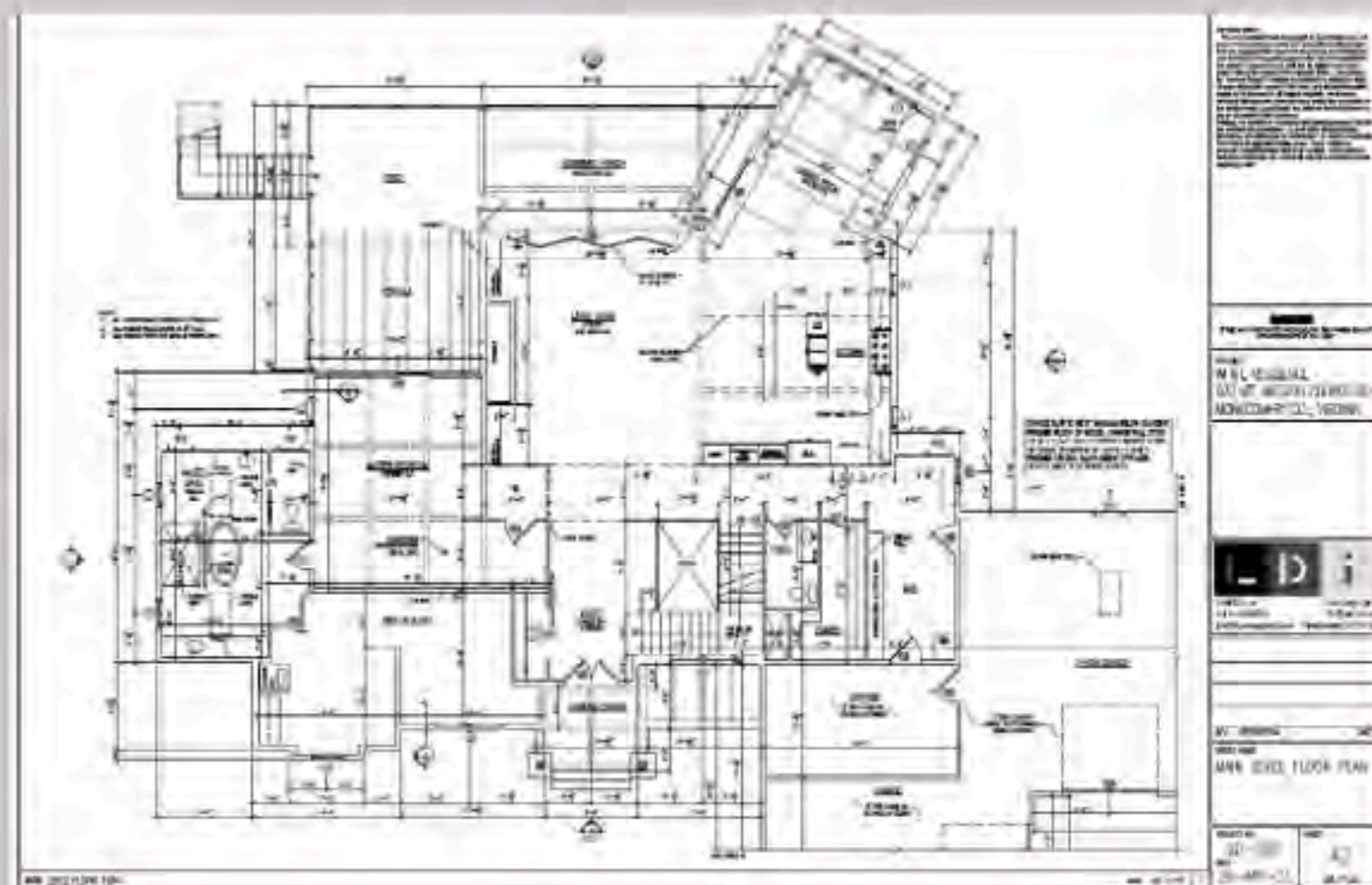
The Carlisle floorplan located in The Meadows, a brand new community in Christiansburg, is a spacious plan with first floor primary suite, two patios, and over 3,200 square feet of living space. Upon entering the two story foyer, you'll gain immediate access to the study through French doors, complete with custom trim wall. A formal dining room with tray ceiling and picture frame moulding leads you through the butler's pantry and walk-in pantry with built-in shelving and cabinets to the heart of the home – the beautiful kitchen. The kitchen features two-tone cabinets, cabinetry style hood, and beautiful stainless steel cooktop and appliances. The large island overlooks the family room with wood beams and twilight see-through fireplace out to the courtyard patio. The fireplace is surrounded by painted white brick to the ceiling with a floating mantel. The courtyard patio features a built-in grill and refrigerator along with plenty of space to kick back and enjoy the beautiful views, either in front of the fire pit or your fireplace! Also tucked away on the first floor is the spacious primary suite with plenty of windows for natural light. The attached primary bath has a large walk-in shower and oval freestanding tub for some serious tranquility and relaxation! There is also a breakfast nook and second covered raised patio off the kitchen, and a roomy laundry room complete with laundry sink, shelving, cabinetry, and backsplash. The second floor also provides ample living space with two bedrooms, two full baths, and a large rec room that can also be used as a fourth bedroom.

FINAL



TYRIS HOMES: Mount Mission

Design

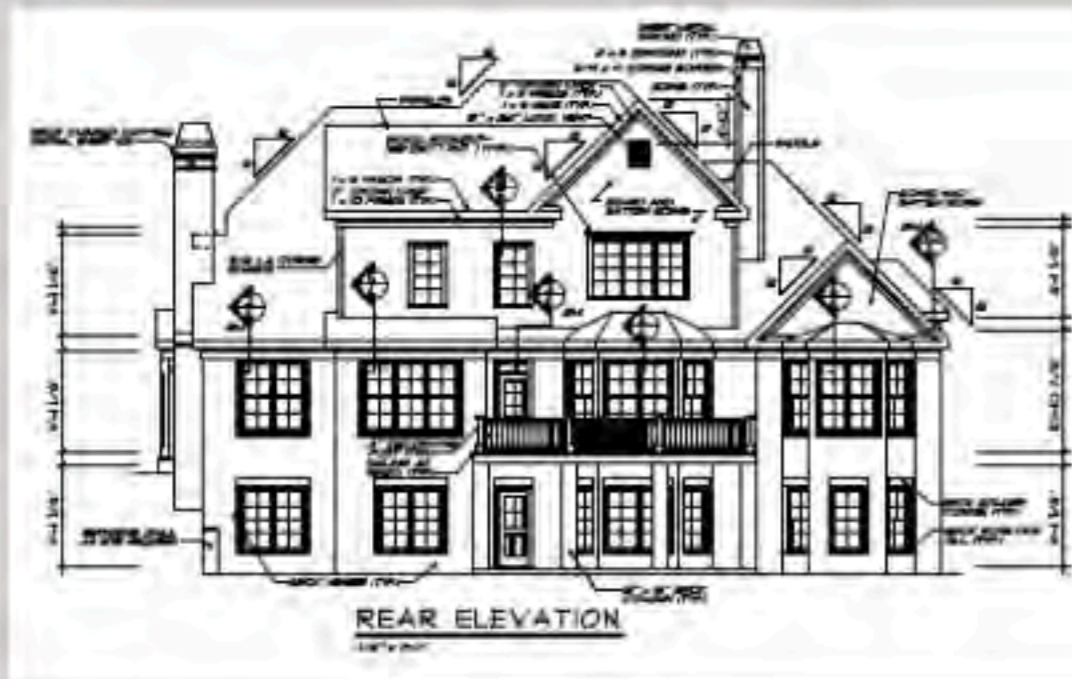


FINAL

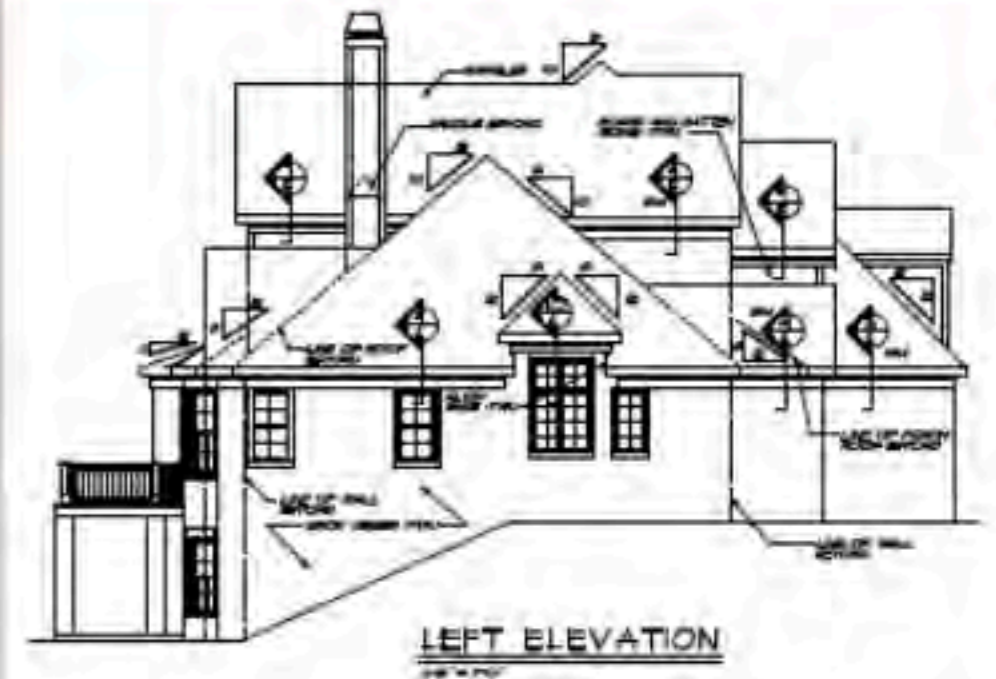


White Builders: Jackson Home

Design



This elegant home is the definition of custom craftsmanship with no detail overlooked! White Builders worked with the homeowner to customize this Frank Betz design. The interior boasts vaulted ceilings, custom woodwork, spacious rooms, a gourmet kitchen with adjacent skulery and custom touches throughout. The creative use of material and color truly bring this stunning home to life!



FINAL



Best of the NRVHBA: NRVHBA Service Award

Nominees

Nominees should be judged on their outstanding support of the NRVHBA through committee, board, or voluntary involvement in the Association including monetary contributions in 2022.



Cat White
Tyris Homes

"As we all know Cat goes above and beyond in his service. From working with the HBA, building officials, clients and community as well as leading the charge on two separate fundraising efforts for families of those lost in the building community. "



Jackie Gardner
Slate Creek Builders

Consistent and selfless in her volunteer efforts.
She is an important part of our team.



Stephanie Bell
Foresight Design Services

Stepped in to fill gaps during Kelsey's maternity leave, always supports activities and missions and leads several association committees

Best of the NRVHBA: Associate of the Year

Nominees

Nominees should be judged on being an active associate member (vendor, tradespeople, etc.) representing the best of NRVHBA membership, commitment to the NRVHBA, its goals and mission, serving the building industry and others with integrity and excellence, and a high customer satisfaction rating.



Brown Insurance



What makes your business stand out? How have you served the building industry?

Continued to be a supportive past President to Justin Boyle, often being a resource for bouncing thoughts and ideas....and a strong shoulder to cry on. Continued to increase my education within the insurance industry through specific industry training (1 class away from my CIC designation which I plan to knock out this spring). This training better arm's me with strategies as well as scenarios that help my clients better understand the coverage they have and perhaps need. Second runner up (I believe) in the member recruitment campaign. Continued to offer support to the NRVHBA through volunteering at the expo and other events. My passion for contractors (generals, subs, and trades) has allowed me to work with many of our local contractors in not only a professional but personal capacity; handling the insurance for well over 40 local businesses directly effecting the building industry in the New River Valley



**From their
customers:**

I wanted to express my admiration for Jeff and the wonderful working relationship we have together. Jeff currently handles our business' commercial insurances and is a great asset to your company. As we've grown in terms of staff, office space, and equipment, he has been incredibly proactive and helpful each time we've needed to add to our policy. In addition, Jeff is a wonderful member of our community here in the New River Valley. He's always excited to make connections for others and build upon the success he's garnered over the years at Brown Insurance. I've known Jeff for years now and found his services through Brown Insurance excellent every time. He's handled commercial insurance for my business currently as well as my former employer's, Baseline Solar Solutions. Anytime someone needs commercial insurance, I send them to Jeff. No other person or company here locally serves the needs of our community as well as Jeff and Brown Insurance.

What makes your business stand out? How have you served the building industry?

"Our commitment to the building industry does not waiver during economic change. Providing competitive and efficient lending solutions for ground up construction and renovation projects consistently remains a high priority for our company. We have never had more bank resources dedicated to this purpose. We truly embrace this role in our community."



From their peers:

"Philip Walker and NBB have handled financing for the last several custom houses we have built, and are currently working with us on both a house under construction and another on the drawing boards. Philip has been professional, prompt, reachable, and courteous. We have nothing but good reports from our clients. The last couple years have been difficult for home builders and home owners, to say the least, and having the support from Philip and NBB has made the process possible."

"We have banked with NBB for about 20 years and have had a terrific experience with everyone along the way. We do our personal banking as well as banking for 3 businesses that we own through NBB. They have assisted us with a number of loans, lines of credit and many special requests for us over the years, including fielding calls from us from other countries while on vacation and helping us resolve an issue. 2022 was no exception with a lot of uncertainty in business, Philip/ NBB helped us increase our lines of credit in case of economic turmoil."

What makes your business stand out? How have you served the building industry?

Rome Mechanical stands out as a subcontractor in our industry by offering a range of benefits to our employees that are rare in our industry. From fully paid health insurance to a 100% 401k match and everything in between, we recognized early on that the key to success in subcontracting is being able to provide a consistent, well-trained and happy work force to our clients. This philosophy has worked well for Rome as our employee's average tenure is more than 10 years. The continuity of our teams allows us to better serve our customers as our employees know they are going to work with these builder clients again and again. Because of this, there has developed a level of trust that has come to describe what Rome Mechanical aspires to be. Our customers know they can count on us to show up, do what we say we're going to do, and treat them fairly when unexpected circumstances arise.



From their peers:

Rome has been a trusted and valued trade partner for us for many years and they are truly one of the most professional organizations that we work with, which includes dozens of trade partners and vendors. This reflects throughout the company from the person answering the phone to each member of each of their crews.

Best of the NRVHBA: Builder of the Year

Nominees

Nominees should be judged on being an active custom, production, or remodel builder representing the best of NRVHBA membership, building and operating with quality and integrity, consideration given to community impact when planning and building, and a high customer satisfaction rating.



What makes your business stand out?

Tyr is always strives for the highest standards and quality. We honor warranty requests on appropriate items, including cosmetic issues. Due to pandemic concerns in 2021 and 2022, some clients were not able to allow us to come into their homes for drywall repairs and certain touchups. Working with their schedules and comfort levels, we allowed a number of clients to schedule warranty repairs several months after their one-year anniversary, which is the typical ending of standard builder warranties.

How has your business impacted the community?

In coordination with our strategic partners, we aim to enhance the aesthetics of the communities we work in. In Giles County we continue to work with our partners to offer affordable housing in the Cedars subdivision. Working with civic leaders, land developers and other partners we have been proud to bring a new subdivision to the Pembroke area. The Heights offers a different level of homeownership in order to give more options in the housing stock of Giles County. The Cedars and the Heights provide housing choices for those who live and work inside Giles County as well as for newcomers to the area who will be commuting the 460 corridor.



From their clients:

We were privileged to have Tyris Homes build our beautiful home in Blacksburg. We had interviewed several different area builders before deciding on Tyris. We met with the owner, Jason, and realized that his company was going to be able to build the home we envisioned. And they certainly did not disappoint!

Since we struggled to put our vision into words and start planning from a blank piece of paper, we were glad we could pick a floor plan of our new home off of their website. The exterior was not as we had envisioned so we sent Jason various photos of homes we liked along with pictures off of Pinterest and Tyris made change after change without every complaining until they had exactly what we wanted. Likewise, we made a fair amount of changes to the inside plans to include removing walls, changing window styles and relocating a bathroom.

Throughout the entire building process, Jason and our foreman, Cat, were very responsive to our questions and needs. We appreciated their attention to detail and it was evident that they took pride in the work they did for their customers.

One evening we made a trip over to the build site to check on progress only to find Cat there pulling drywall off the wall as he realized there was to be soundproof insulation on that interior wall as per our contract. We would never have known that this was missing but he was not going to let that be an excuse to leave it not up to specs.

Prior to building our home, we had heard horror story after horror story from people who had new homes built. Knowing that this was going to be our "forever" home, we figured we would chance it as we had owned our lot for about a dozen years and looked forward to the time we could finally build our house in Blacksburg. The gamble paid off as we had no horror stories and truly had a great experience with Tyris Homes and all their subcontractors. We LOVE our new home and have received so many compliments on our house—a true testament to Jason and Cat. Even now that we have settled in, we have had a few minor follow-up items and Cat is always quick to resolve any issues to our satisfaction. We would highly recommend Tyris Homes to anyone in the market for a home builder.

Proud owners of a Tyris Homes build – Kim and Steve Gray

Eagle Construction of VA

What makes your business stand out?

At Eagle, we measure our profit in terms of the impact we have on our homeowners, trade partners, the community, and our employees. We are committed to the craft, our culture, and above all, our customers. Our core values are aligned in everything we do: passion, respect, accountability, and commitment. When it comes to our customers, we strive to exceed their expectations by leveraging trust as the foundation of our success and hold ourselves accountable by doing what we say we are going to do. This includes doing the right thing regardless of what that entails. Our values are displayed on our house wrap so that they are literally and figuratively in our homes forever!

How has your business impacted the community?

Community involvement is extremely important to Eagle as we strive to leave a lasting impact around the communities we build in. We have created relationships with the local high schools to support their athletic programs, assisted with Herma's Readers to provide Christmas clothing to elementary schools in need, and continue to look for ways we can be involved in the local community. We recruit for our internship program from the Virginia Tech Myers-Lawson School of Construction and provide learning opportunities and real life field experience to local students. We have also made sure that despite the housing inventory shortage, we have continued to have move-in ready homes available so that there are more housing opportunities for those relocating to the New River Valley.



From their clients:

"I am writing this letter to express my highest regard and recommendation for Eagle Construction. As a homeowner who has worked closely with Eagle Construction, I can say without a doubt that they are among the best in the business. Eagle Construction provided exceptional service and exceeded all of my expectations throughout the entire building process.

Their attention to detail, commitment to quality, and exceptional communication skills made them a pleasure to work with. Their professionalism and expertise helped turn my dream home into a reality. We especially enjoyed working with our project manager who went above and beyond to ensure that our home was built exactly according to agreed specifications and customizations. We were also very happy to move into our home ahead of schedule and love living in our new home and community.

I would recommend Eagle Construction without hesitation to anyone looking for a home builder who is dedicated to their craft, committed to their clients, and produces results that are nothing short of exceptional."

What makes your business stand out?

We have enjoyed a great partnership with Floyd County High School - Giles Technology Center for several years. We provide an opportunity for the students to build real-world skills while providing an affordable housing option to the community member. In 2022 we expanded our efforts to Pulaski County High School with a project in Dublin. Collaborating with the school and Setter Construction has allowed us to continue our efforts to provide opportunities to build our future trades workforce and affordable housing options.

How has your business impacted the community?

We continue to search for properties throughout the NRV that we can develop into affordable housing options for our community. We aim to ensure that our homeowners pay no more than 30% of their income toward housing costs. We do this with capital contributions, donated products, and volunteers who assist us. Statistics demonstrate that this model allows homeowners to receive better medical services, education opportunities, and generational wealth building. All these efforts create a more robust and vibrant community.



From their clients:

"I had a trailer in Blacksburg with my two children. It was an older trailer that needed a lot of repairs which I could not afford. I heard about the Habitat Program through a friend, and thought, "wow this is a great program." I filled out the application and had an interview so they can review my home in front of the board. They called me at work and I was so happy that I received my home from Habitat for Humanity. I still tear up till this day about it."



From their peers:

"Habitat for Humanity is not only providing quality affordable housing options for income restricted families, but they have been instrumental in partnering with some of our area schools to provide opportunities for students to learn about the construction industry with great hands on experiences."

THANK YOU!

Please submit your votes for the 2022 Excellence in Building Awards. Remember - one vote per member company.

Be sure to mark your calendars and save the date for the Annual Excellence in Building Awards Gala, where we will announce the winners!

April 28

6:30PM

Eastern Divide Brewery, Blacksburg